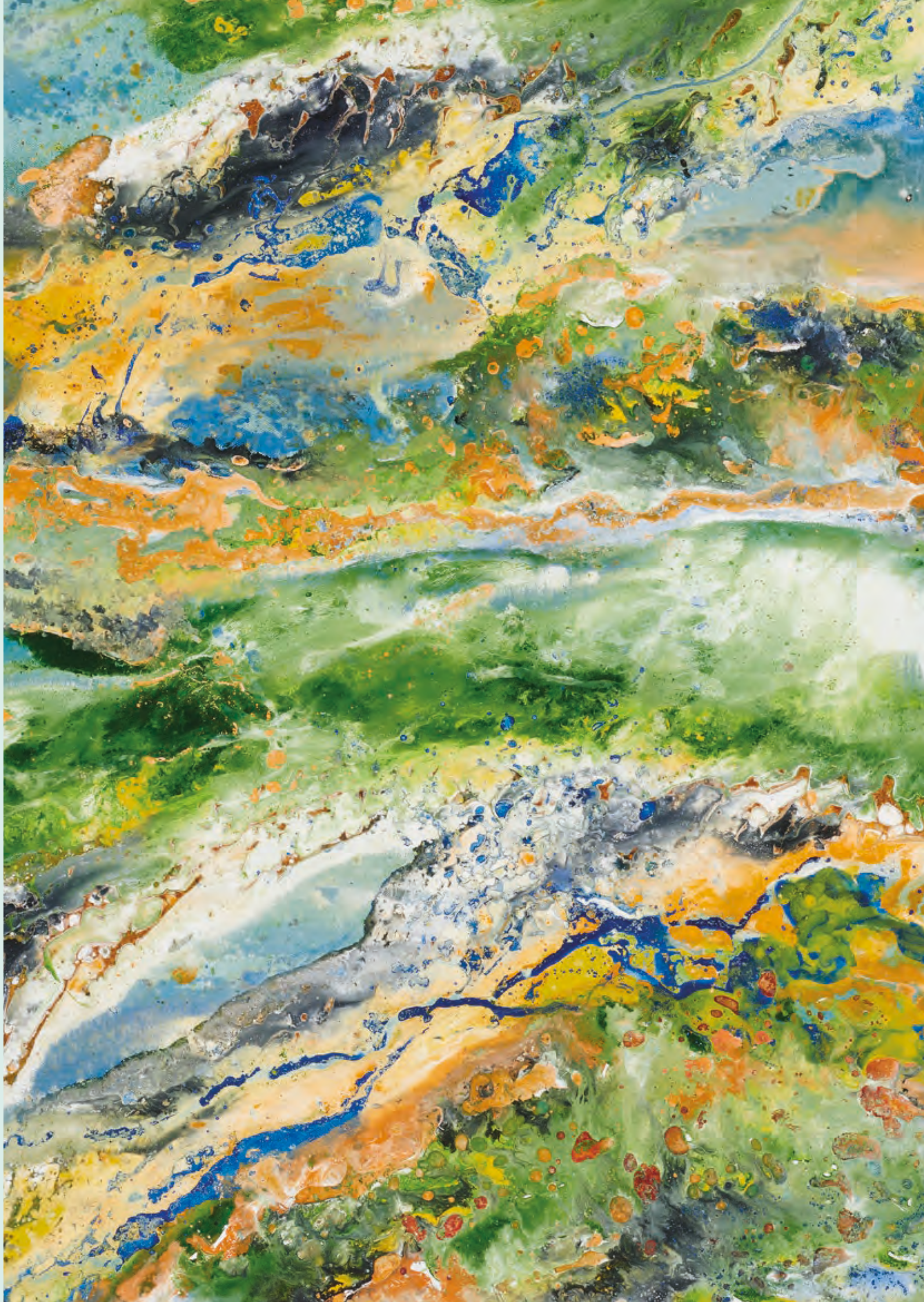


merri

“MAB and the Buxton family take pride in building local projects, and Merri is no different. Drawing inspiration from its surroundings, and with the passionate focus of esteemed local architects Six Degrees, MAB is proud to present this landmark project.”

MICHAEL BUXTON
EXECUTIVE DIRECTOR
MAB

Artwork by Jerry Osadzuk



Location and Neighbourhood	8
An introduction to Merri Creek	10
Exploring the wider neighbourhood	24
Local connections	34
Design	36
A connection to the creek	38
Masterplan	40
Nature nurtured	44
A shared sense of space	47
Landscaping	51
Spaces to call your own	52
Adding texture to the environment	57
Makers	60
Interiors	64
A welcome home	66
Apartments	69
Split level homes	81
Creek fronting homes	83
Schemes	89
Sustainability	98
Building for the future	101
A responsible home	102
Team	104
MAB	107
Six Degrees Architects	110
TCL Landscape Architecture	111

Disclaimer: The information, images and illustrations contained in this brochure has been prepared by MAB Corporation Pty Ltd ('MAB') in good faith and with due care and is for promotional purposes. Any details of the project, artistic impressions and drawings used herein have been developed prior to completion of the project and the project plans, specifications and configurations are subject to change. MAB does not warrant or represent that the project will be developed in accordance with the details or the accuracy of any information contained herein and does not accept any liability for any error, discrepancy, negligence or otherwise. The information contained herein does not constitute all, or any part of, an offer for any property referred to in this brochure.

*Views shown are indicative only and are based on the site at the time the image is produced. Landscapes may change and a view which is unrestricted may be restricted in the future. MAB does not warrant the accuracy of the view contained herein and does not accept any liability for any discrepancy or otherwise in the depiction of the view. Purchasers must not rely on these being the final views upon completion. March 2022.



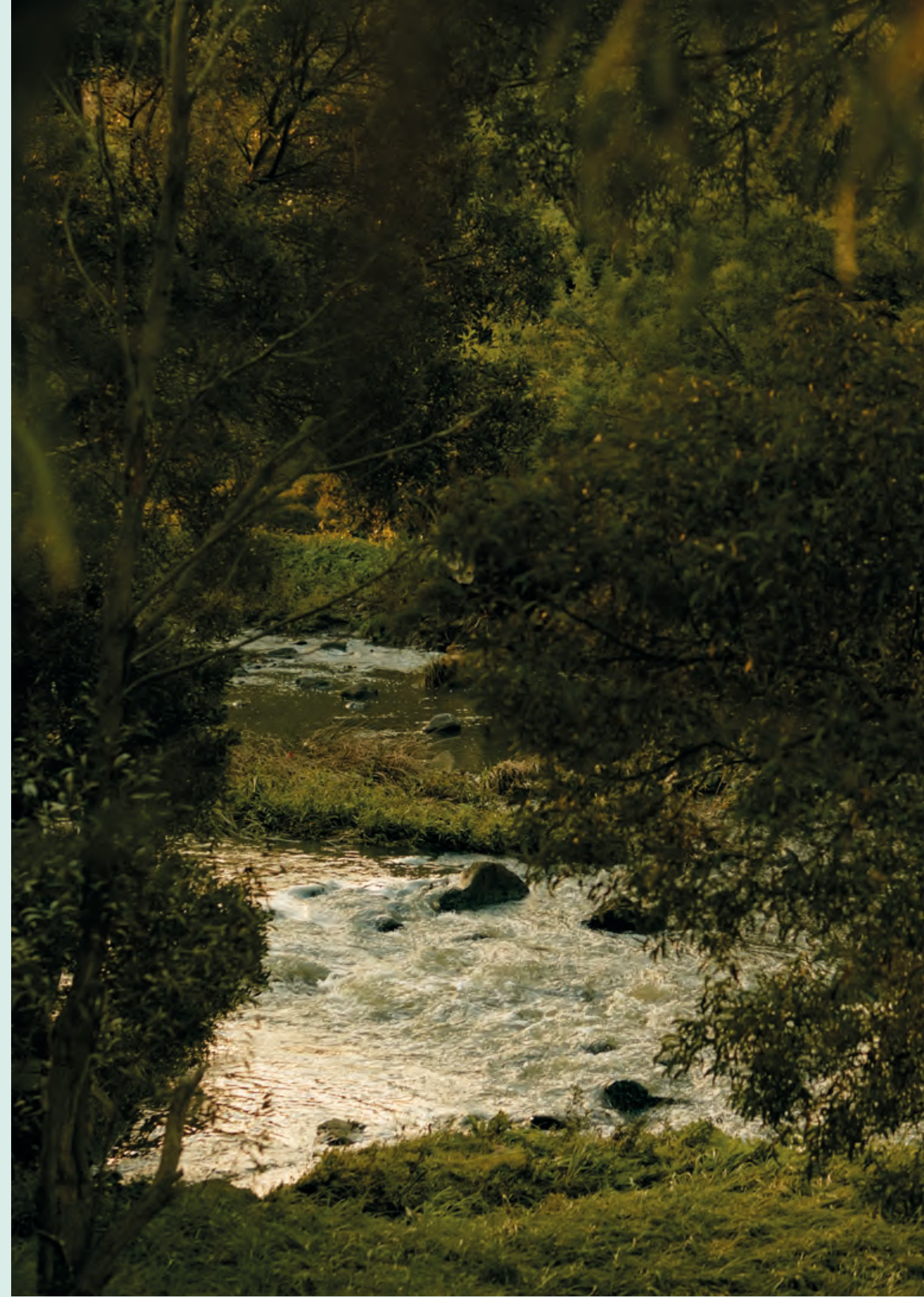


Merlynston Streetscape from Walker Street, Artist Impression

On the banks of Merri Creek, these homes are bordered by Australian bushland to the south, low-rise cottages to the north and are a short stroll away from the bustling locale of Westgarth. Merri Northcote has been conceptualised to complement the natural beauty of the creek and reflect the values of the surrounding community. The buildings contain a mix of apartments, split level homes and creek fronting homes, from one to four bedrooms. Each has access to a shared rooftop garden with tree-top views. They feature natural light, carefully resolved interiors and a focus on sustainable living. These are homes designed for people to connect with nature and be part of a lively inner-city community.

Location and Neighbourhood

Situated north of Melbourne, Merri Creek flows from Wallan until it joins the Yarra River in Fairfield. At the southern boundary of Northcote, the sloping banks of Merri Creek rise to a spectacular, elevated vantage, stretching across Fitzroy North towards the city. Naturally significant to the area, the creek offers a sense of retreat, with natural and structured pathways. It is a haven for flora and fauna and a place for people to connect and feel immersed in nature.





High Street Bridge

Walker Street Residences

View Over Westgarth from Ruckers Hill, Northcote





Westgarth Theatre

Mature Trees Along Merri Creek





High Street Bridge From Merri Creek



Trees Along Merri Creek



Rushall Footbridge Connecting Westgarth to Rushall Station



Underneath High Street Bridge



VEX – Local Food & Wine



Exploring the wider neighbourhood

Merri is gifted with three modes of transport: the rustic steel footbridge at the western tip provides access to Rushall Train Station on the opposite river bank. The number 86 tram passes on High Street, bound for RMIT in Bundoora, and the Capital City Trail provides safe off-road cycling from Merri; tracing a wide arc around the city to connect Melbourne University and the Melbourne Biomedical Precinct to the creative hubs of Collingwood and Richmond in the south-east.

Estelle – Fine Dining by Scott Pickett





All Are Welcome – Bakery



Oh Loretta! – Wine Bar





Mixed Business - Cafe

Spensley's - Restaurant and Wine Bar



Edinburgh Gardens

Merri

Merri Creek

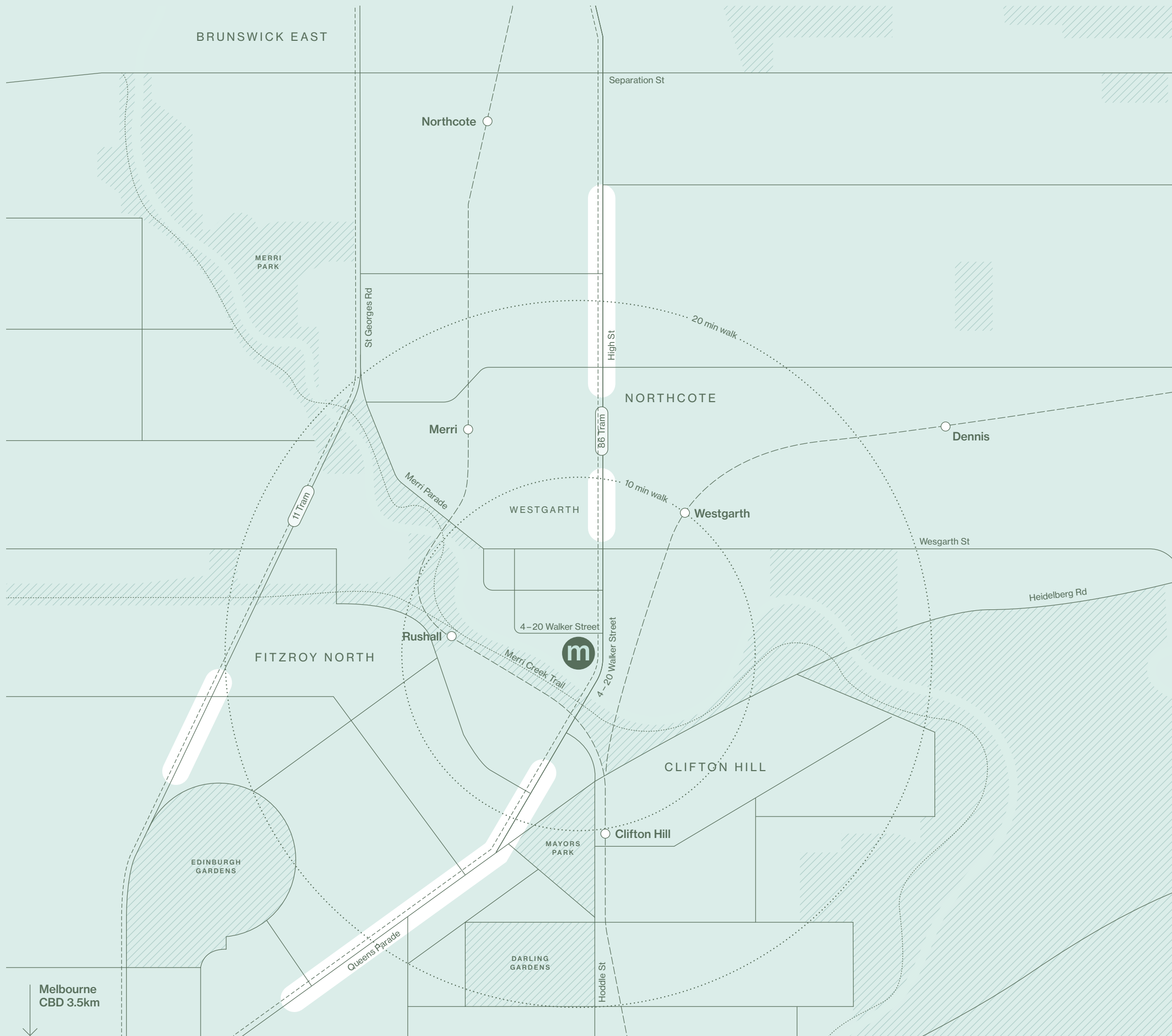
Rushall Reserve

High Street Westgarth shopping, dining and cinemas

Only 250 metres up High Street are the Westgarth shops, the historic birthplace of Northcote and home to many iconic and timeless venues including the Westgarth Cinemas, organic groceries, award-winning restaurants, live music, a yoga studio, microbrewery and more.

But time has not stood still in Northcote. The unique blend of history, convenience and culture has attracted a host of new amenity and High Street is revered as a hot spot for up-to-the-minute dining, lifestyle and culture. This remarkable blend of convenience and style has sent house prices up to eye-watering levels in the surrounding streets, but Northcote locals take it in their stride.

Ingrained with a relaxed and egalitarian attitude, Northcote's culture continues to champion a healthy environment, strong community, a love of art and the gift of good living. It is these values that we seek to embody at Merri.



Local connections

Approximate walk times

Transport

86 Tram	1 min
Rushall Station	5 mins
Westgarth Station	10 mins
Clifton Hill Station	10 mins
11 Tram	15 mins
Northcote Station	20 mins

Education

Westgarth Primary School*	10 mins
Fitzroy High School*	15 mins
Merri Creek Primary School*	15 mins
Spensley Street Primary School*	15 mins
Northcote High School*	20 mins

*Refer to Department of Education and Training Victoria for up to date school zoning.

Park

Merri Creek Trail	5 mins
Edinburgh Gardens	15 mins
Darling Gardens	15 mins
Yarra Bend Park	20 mins
Merri Park	20 mins
Fairfield Park	25 mins
Fairfield Park Boathouse & Tea Gardens	25 mins
Northcote Skate Park	30 mins

Retail & Entertainment

Westgarth Shops	5 mins
Westgarth Cinema	5 mins
Clifton Hill Shops	10 mins
Collingwood Leisure Centre	15 mins
Northcote Shops	15 mins
Fitzroy North Shops	15 mins
Bargoonga Nganjin, North Fitzroy Library	20 mins
Fitzroy Victoria Bowling & Sports Club	20 mins
Fitzroy Swimming Pool	30 mins

Design



A connection to the creek

Merri is designed to complement the natural beauty of Merri Creek. The homes aim to feel familiar and immersed in their natural surroundings. With a relaxed connection to the natural environment, each building's materiality speaks to a timeless and integrated quality, where bushland will infiltrate the architecture over time. Each building responds to its surroundings through varied height and scale with connections through intimate shared spaces, providing the opportunity to meet neighbours or enjoy a secluded spot in the sun.

Masterplan

1. Malcolm

Bordering High Street, Malcolm is social housing actively managed by HousingFirst, a not-for-profit housing association and a long term and trusted partner of MAB.

2. Aitken

Here you'll find one and two bedroom creek fronting homes and apartments, with living and outdoor terraces oriented towards views to Merri Creek and across to the city. With between three and six apartments per floor, most apartments are located on corners, maximising natural light and cross ventilation.

3. Central

Central features a range of designs with smaller households in mind. Benefiting from corner apartments taking in leafy views across to the piazza to the north; or two and three bedroom creek fronting homes to the south. Each home in Central receives excellent sunlight from either the east or west and is designed to provide an inspiring environment night and day with space allocated for desks and study nooks.

4. Edgars

A collection of large one, two and three bedroom homes with just four apartments per level; each home is positioned for a corner view. These apartments are designed to maximise views to Merri Creek and Melbourne's city skyline. The top floor creek fronting homes are split level with bedrooms separated from living rooms that open onto spacious terraces or private rooftop gardens - perfect for entertaining.

5. Wallan

Limited to twelve single level apartments, this intimate building sits at the western apex with uninterrupted, 270 degree views of the creek and city skyline. Ground level apartments provide direct Walker Street access and will instantly appeal to those craving a large north facing garden. Upper levels offer generously proportioned two, three and four bedroom homes that are complete in every detail. Picturesque sightlines down the Merri Creek, varied orientations capturing sunlight throughout the day, and expansive treetop terraces are all features of these remarkable homes.

6. Merlynston

The Merlynston building utilises an innovative design of, interlocked, split level homes that provide north oriented living areas and spacious north facing terraces maximising sunlit vistas across Westgarth. Featuring spacious two and three bedroom homes in a townhouse format, with bedrooms separated from the living, these are ideal homes for families.



Artist Impression

Featuring six distinct buildings within the triangular site, Merri has an expansive frontage onto Merri Creek, bordered to the north by Walker Street and High Street. Close to the east. Creek fronting buildings are perched on the elevated escarpment as Northcote rises away from the city. Each home is a unique proposition, some are immersed in the creek's natural environment, whilst the Walker Street buildings benefit from the uninterrupted north-facing sun. Closer to the creek, the homes increase in size and benefit from double and triple aspects or split level living configurations.



View Through to Merri Creek



Each building name is drawn from the six tributaries that run into Merri Creek. The creek flows 70km from Australia's Great Dividing Range through Melbourne's northern suburbs to the Yarra River. Many smaller tributaries flow into the creek from upstream including Merlynston, Central, Edgars, Aitken, Malcolm and Wallan creeks. The creek borrows its name from the Wurundjeri-willam phrase Merri Merri meaning "very rocky".



Central Building and Shared Pathway Access to Merri Creek, Artist Impression

Nature nurtured

Merri makes the most of its unique location by blurring boundaries to both the creek and nearby urban environments. The site offers an opportunity for locals to connect with the creek along a new path created as part of the project. Open pathways from Walker Street provide vistas through the buildings and open onto sunny piazzas with eucalyptus trees, leading down towards bushland and water.

Urban design and the natural environment are brought together through the blending of architecture and setting. Each building and its surroundings establish places for residents and the public to connect. Focusing on the landscape architecture throughout, nature is encouraged to integrate with the public spaces and parts of the building.





Wallan and Merlynston Building Entry from Walker Street, Artist Impression

Central Building Shared Pathway, Artist Impression

A shared sense of space

With six buildings cascading back from the corner of Walker and High Streets, Merri's ground level shares four piazzas, providing distinct spaces for cosy connections, a neighbourly chat or a moment of peace. All car parking and vehicle access is located underground and out of sight, making way for peaceful, private and accessible spaces above.

This is where the community makes it their own. Where artists can showcase their work. And where the sound of the creek is always nearby, while every element, every area, has a sense of permeability.

“Merri is about bringing an old site into the twenty-first century. This is a landmark for the area and a chance to create something special.”

Wallian Building Rooftop Views of Treetops and City, Artist Impression



“The border between public and private spaces is separated by a soft transition. This is where the landscape becomes important, increasing privacy which is managed through walls and landscape alike.”



Casuarina Cunninghamiana



Chrysocephalum Semipapposum



Correa Alba



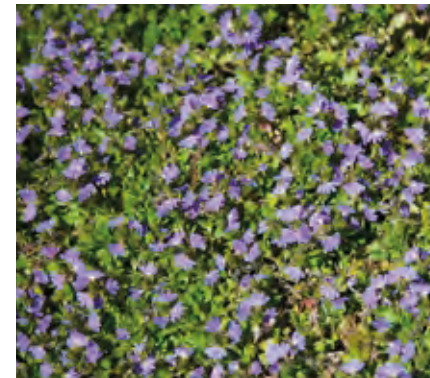
Dianella Cassa Blue



Goodenia Ovata 'Gold Cover'



Rhagodia Candolleana



Scaevola Albida 'Mauve Dome'



Themeda Triandra



Thomasia Solanacea

Landscaping

Between Merri's buildings, the landscape adopts floral themes which create a year-round seasonal environment. Rich, layered and textured vegetation focuses on three distinct planting themes; yellow, red and blue. Pedestrians can move in and out of these colourful spaces, experiencing dappled light in winter, foliage in autumn, bright blooms in spring and leafy canopies in summer. An important priority for the landscaping architecture is rehabilitation of indigenous and native flora such as feather spear-grass, eucalyptus, and acacia's along Merri Creek. This, paired with the retention and supplementing of the existing trees along Walker Street, restores the area's natural surrounds.

Spaces to call your own

Collaborating with landscape architects, TCL, each building has a dedicated rooftop garden. Creek fronting buildings enjoy sweeping views of the nearby creek, tree tops and the city beyond, with comfortable spaces fitted with shade structures and a garden experience interspersed with pockets of seating and outdoor dining. The accompanying planting design will match that of the Merri Creek below, providing a private place of refuge and space where local birdlife is encouraged to visit.



Edgars Building Rooftop Views of Treetops and City, Artist Impression





Plazza between Central and Edgar's Building, Artist Impression

Adding texture to the environment

High quality and robust materials feature extensively throughout Merri. Textured concrete and masonry give gravitas and longevity to the structure, in a cohesive architectural language. From the ground floor, pedestrians can take in accents and details that provide visual interest. Steelwork, feature tiling and recycled timber help frame the buildings' setting, while lead lighting details such as signature stained glass windows throughout the lobbies add visual accents within. A focus is placed on the use of natural materials and colours to merge with the surrounding environment, with an added commitment to target over 80% local suppliers and materials for the construction, which helps support Australian manufacturing and gives confidence that components originate from trusted sources.



Edgars Building Looking Back from the Creek, Artist Impression





Salvage Centre – Workshop

Salvage Centre

- Q Tell us about the business and how it started?
A We specialise in recycled timber, utilizing timber from flooring to furniture. We started by saving windows and doors around Melbourne, and then it escalated to just doing timber and developing products using the old timber from beautiful old buildings. Rather than seeing timber go to landfill, we've generated world class products from old timber.
- Q Tell us about your process?
A We pull down the roof trusses and the wall studs of houses, physically pulling the houses down by hand so we can save the timber from getting damaged by excavators and taken to landfill. Then we go through the process of nailing it and repurposing it back into flooring. We spend the time and effort to pull the timber out by hand, whereas most people don't have the time to do this. We recycle 90% of the timber we find.
- Q Why is it so important to save the timber?
A The biggest advantage is the sustainability side of using recycled timber for the environment, we're a carbon neutral product. We are also using quality timber. A lot of the timber in houses that are demolished use old growth timber, so what we're pulling out is around 300 years old. This timber is much more stable and durable than what is produced today. We create jobs and invest money into labor with every house that we demolish, employing an extra three to four people to help.

There's nobody in Australia that can do what we do, we're the only company that's FSC accredited, which is the international governing body for timber. Every house that we do, we actually document the timber that comes out of it. So we've got a database of all the timber that we've recovered. We can then obviously prove that we're not selling more timber than what we're accumulating.

Cameron Loney, Director
Featured in the Lifecycle scheme only.

Victorian Bluestone Quarries

- Q Tell us about the business and how it started?
A We're a family business that's been running for over 52 years, processing Australian Bluestone and granite and predominantly supplying to civil, commercial and domestic markets. We saw a niche in the market for genuine Australian Bluestone products. I work with my sisters on the business and now we've got our kids involved, everyone's on the same level of providing a beautiful product for our beautiful city, and beyond.
- Q Why did you get into the business?
A Back in the 1960's it was very, very hard and costly to find quality bluestone. So my dad decided to get into it and start supplying real, genuine stone to the city of Melbourne.
- Q Tell us about the products you're installing at Merri?
A We're installing bluestone tiles into the development that's reclaimed Bluestone from the site. We're cutting it up, grading it and then having it as a feature tile in the apartments to show that it's a local product. Imagine the block of stone like a loaf of bread; we cut slices using diamond blades. Once our materials are cut to size, the actual offcut itself will either get crushed into road base or sold off as a product for garden landscaping. The actual sludge from the material can get repurposed as a clean fill for the site, or a fertilizer for trees. It's satisfying that we're repurposing what's been in the ground for millions of years and it's not going to the tip. The site is lucky enough to have brilliant material to utilize in the project and give a sense of history to the owners of the new homes.
- Q What are the benefits of using this product over others in the market?
A It's a natural product and is fully sustainable. The offcuts get recycled into road space or features for gardens. We're supporting the local industry, local small families and local quarries. There's an ongoing effect on local processes of tooling, which is beneficial to all of us. It's very important to keep our Australian stone industry alive, where we are repurposing a product that would normally go into landfill.
- Peter Skiros, Managing Director
Featured in the Lifecycle scheme only.

Adadaz Leadlights

- Q Tell us about the business and how it started?
A As a second generation family business, I got into work at an early age through my father. What we do is bespoke stained glass windows; repurposing old glass with different patterns and textures in a way that works in modern environments.
- Q Can you tell us about the project that you're installing at Merri?
A Using colour design and texture, we make different LED profiles and use glass in a way that people usually wouldn't think of using it. The glass at Merri has elements of the river running through it. We've drawn full scale drawings that we then cut the glass to and put this together like a jigsaw puzzle. It's entirely handcrafted.
- Q What makes your products so bespoke?
A They're unique, handcrafted and designed specifically for the clients needs. We repurpose old glass in a way that no one would think to use it in. It's seeing the glass in a different light, as an art form. Whole glass pieces can be quite overbearing sometimes, but using tiny bits of existing glass really makes our pieces unique.
- Adam Hall, Owner

Victorian Bluestone Quarries – Workshop



Adadaz Leadlights – Workshop



Interiors



A welcome home

Each of Merri's lobbies are designed to be legible and intuitive for visitors, with the canopy trees in the piazzas nearby adding to the shelter and sense of arrival. These are restful spaces, embellished with Six Degrees signature stained glass and steel window detailing. Each lobby features a unique leadlight installation complementing the resident book-sharing station.

Each building can be accessed from Walker Street without climbing steps, and building security is assured through video intercom, keyless entry systems and CCTV surveillance.



Three Bedroom Apartment Living . Artist Impression

Apartments

Every apartment at Merri is created to make the most of its own space, location, and natural light. Apartments feature ample storage and flexible living space that can be furnished in a variety of configurations and are suitable for every walk of life. Heating and cooling is provided from air-conditioning with private condensers located on the roof.

Inside, you'll find spacious kitchens, and bathrooms cleverly designed to just work. Every detail has been thoughtfully considered from convenient concealed power points that allow for quick access to appliances to storage spaces for clutter-free environments, and elegant bathroom lighting that illuminates the entire vanity mirror.



Four Bedroom Apartment Living, Artist Impression



Four Bedroom Apartment Living, Artist Impression



Four Bedroom Apartment Living, Artist Impression



One Bedroom Apartment Living, Artist Impression

Courtyard in Apartment Living, Artist Impression



Balcony in A apartment Living, Artist Impression



Apartment Master Bathroom, Artist Impression

Apartment Study Nook, Artist Impression



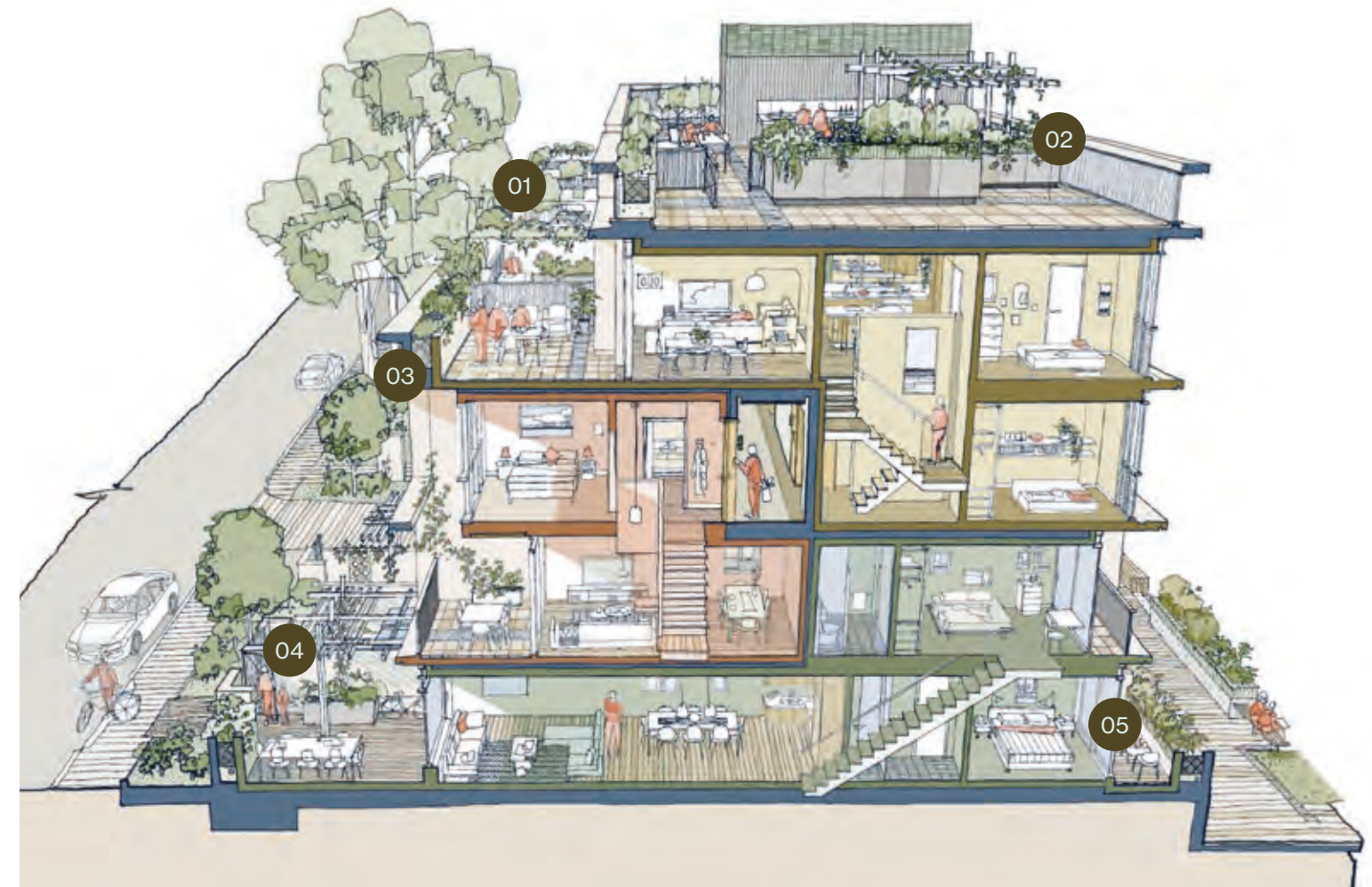
Split Level Home. Artist Impression

Split level homes

Merri's split level homes are situated along Walker Street. The exterior design pays homage to the existing terrace-style homes set amongst the leafy neighbouring streets.

These homes are designed to take advantage of their north orientation with all living areas and private terraces facing north and bedrooms predominantly located on the south side. The innovative interlocking design allows natural air to pass through the full length of the apartment, aiding cross ventilation. The combination of passive ventilation and good orientation optimises thermal comfort reducing energy consumption. Efficient layouts separate the living area from the bedrooms to give additional seclusion in a busy household. Ground floor homes facing Walker Street enjoy direct street access with secure, private courtyards shaded by canopy trees.

01. Private north facing terraces.
02. Resident rooftop garden.
03. All balconies benefit from additional space with air condenser units located on roofs.
04. Ground floor homes fronting Walker Street have direct access with secure, private courtyards shaded by canopy trees.
05. Self-contained home with the kitchen, living, bedroom all on the lower level.





Creek Fronting Home Living, Artist Impression

Creek fronting homes

The largest of Merri's dwellings are the creek fronting homes, with single and double level options, providing large, well-proportioned internal spaces, views of the city skyline and an immersive tree-top setting that soaks in the natural splendour of the creek ravine.

Every creek fronting home includes air-conditioning to the living and master bedrooms with an option to add to other bedrooms as preferred. Internal specifications are adapted to these large apartment types so that the most appropriate features are included in each home. Oversized master bedrooms are partnered with large ensuites with baths and double sink vanities. In the kitchen, cooking equipment is also upscaled, with 900mm induction cooktops and optional twin ovens with generous pantry space and kitchen storage. Laundries and abundant general storage cater to the demands of a larger household.





Creek Fronting Home Terrace, Artist Impression



Creek Fronting Home Living, Artist Impression

Schemes

Each of the four interior schemes at Merri is an expression of materiality and craft. Where considered design is accentuated by great detail. The materials of the schemes, while similar, have a slightly different approach. Maintaining the tactile quality of exposed concrete throughout, each scheme maximises the generosity of space within each dwelling. Every element is considered, with nothing feeling out of place.



Lifecycle

Merrri's signature scheme features a selection of locally sourced materials, along with reused and recyclable materials where possible.

Sourced from demolished buildings throughout Victoria, recycled messmate timber flooring runs throughout the homes. Processing this characterful native timber into an engineered floorboard delivers both a hard wearing and stable product. Stainless steel benchtops feature in the kitchen and are made of approximately 60% recycled content including 25% reclaimed scrap, 35% industrial scrap and 40% new raw materials. Solid recycled timber benchtops are chosen to complement these, made from recycled messmate, also reclaimed from demolished buildings in Victoria. In the bathrooms, feature tiles are made from bluestone reclaimed from the site during excavation, while the tiled floors and walls come with an end of life agreement for re-use. The vanity top is created using glass sourced from kerbside pick-up in Melbourne, where bottles are crushed, washed and graded to a fine texture, then formed into the benchtop product. Brass detailing also provides recyclable opportunities and environmental advantages over using chrome. As it is a raw product, no secondary finishing or plating is needed, negating the use of potentially harmful chemicals.





Artist Impression

Artist Impression

Light Oak

The Light Oak scheme is designed to accentuate the spacious light-filled spaces. Lighter joinery timbers are matched with hardwood edge details and feature handles. European Oak timber flooring are paired with natural wool carpets to the bedroom and terrazzo tiles in the bathrooms, celebrating the apartment's honest natural palette. Detailing is directed to the places that are inhabited the most, the fine reeded glass to the vanity mirror cabinet lighting, and the hand-finished brushed surface of the Australian made tapware.



Urban

Drawing on the warmth and urban character of Melbourne, the Urban scheme explores the Six Degrees palette of boldly contrasted finishes and fine detailing. Celebrating the raw and honest materials from the exposed concrete ceilings to the European Oak timber flooring, wirebrushed to enhance the natural Oak grain. The joinery marries darker grained joinery panels, solid spotted gum detailing with raw brass detailing and tapware, along with some gorgeous Melbourne-made tile detailing.



Forte

The Forte scheme presents a robust selection of materials that embrace the materiality of the building and complement it through materials that accentuate the layout of light filled spaces.

This light scheme features a selection of practical and resilient materials, from concrete look ceramic tiles to wool mix loop pile carpets. Built for years of sustained use, the joinery features timber look laminate panels with laminate benchtops. The detail of the tiling brings us back to the elements of design from the broader development, building on the sense of place and the character of Merri.



Sustainability



Merri Creek Banks

Building for the future

Merri presents a responsible approach to urban living. A place where residents can help preserve our environment while benefiting from notably lower energy and water costs.

Energy-efficient design

Merri residences are designed to be some of Melbourne's most energy-efficient, benefitting from rooftop solar, double glazing, passive solar design, LED lighting and electric heat pump hot water systems. This provides optimal thermal comfort - staying warm in winter and cool in summer, with additional acoustic insulation benefits and utility cost savings all year round.

Harvesting and conserving water

All Merri residencies benefit from rooftop rainwater harvesting, reducing reliance on potable water. Water sensitive urban design will be integrated with rainwater capture and reuse for all gardens. Homes also feature taps, toilets and a dishwasher with an average five-star WELS rating. Landscape drip irrigation is fitted with a moisture sensor, meaning plants will never be over-watered.

Zero reliance on fossil fuels

Set up to operate carbon neutral, the buildings will include rooftop solar panels, allowing for onsite renewable electricity generation. With the fully electric operation, including induction cooking, along with a site-wide and cost-efficient green energy plan, each home operates 100% energy emission-free.

Reduced environmental impact

Landscaping design and building features reduce the impact of the heat island effect through roofing materials, landscaping and shading. Merri residencies will link native vegetation from the creek through the development while retaining significant trees to the edge of the site.

Pollutant-free interiors

All homes at Merri benefit from low volatile organic compound paints, carpets, adhesives and sealants, as well as low formaldehyde engineered timber products throughout.

Using locally-sourced materials

Unlike most multi-residential projects, which source most materials from Asia, Merri will target over 80% local procurement and materials for the construction of the project, which helps support Australian manufacturing and gives confidence that components originate from trusted sources.

Creating jobs for apprentices

Merri is committed to ensuring that a minimum of 10% of the total labour construction hours on the project is performed by apprentices, trainees and engineering cadets, helping to upskill the Victorian labour force.

Car sharing and bike storage

A limit on carbon footprint will be created through car-sharing adjacent to Merri that will be available to residents, along with secure bike parking facilities.

A responsible home

All the homes at Merri are designed responsibly and with the future in mind. MAB is committed to delivering each home to a 5 Star Green Star standard, a certification that will be provided by Australia's leading Green Star authority, the Green Building Council of Australia (GBCA), on completion. But sustainability is more than just a consideration for the environment. Social sustainability is also addressed at Merri, with the project setting a benchmark for local material procurement and responsible construction practices.

What is Green Star?

Green Star sets the standard in Australia for sustainable buildings and places.

Launched by the GBCA in 2003, Green Star tools guide and measure the sustainability of individual buildings, entire communities and the places in between. Green Star is the largest, most comprehensive system of its kind in Australia. MAB guarantees all homes at Merri will be built and certified to the 5 Star Green Star standard.

To achieve certification, Green Star thoroughly assesses a project's sustainability attributes and rates these using a proprietary rating tool.

While many new homes on the market claim to be sustainable, few meet the Green Star standard. The Green Star As-Built certification, provides peace of mind that your home will deliver significant health, resource efficiency and cost-saving benefits.

What is NatHERS

The Nationwide House Energy Rating Scheme (NatHERS) gives homes a star rating out of 10 based on how its building design addresses energy efficiency. Homes with a higher star rating are considered more thermally comfortable and cheaper to run than homes with a lower star rating.

Merri will achieve over a 7 Star average NatHERS rating which exceeds current regulatory standards.

Looking Down on Merri Creek



Team



MAB Founders, Andrew and Michael Buxton



Banksia NewQuay, Designed by McBride Charles Ryan (MCR), Developed by MAB

For more than 25 years, MAB has delivered exceptional developments built on a legacy of originality, quality and excellence. A privately-owned business backed by five generations of Buxton family property experience.

MAB's diverse expertise helps shape every project to create outstanding places for the people of Melbourne.

Merri presents a unique opportunity to embrace all of MAB's development principles, with a community-centric design, unique location and ambition to celebrate local art and culture. Michael Buxton (AM) is the founder and lifelong supporter of Buxton Contemporary, a landmark gift to the University of Melbourne's art school to exhibit a museum-quality collection of Australian contemporary art.

As part of Merri, an artist residence will be developed in association with Creative Victoria, where a local artist will reside and work, sharing their processes, pieces and host creative workshops with residents and the public.

Awards

2019 – Elm & Stone,
NewQuay

Melbourne Design Awards
Silver Winner, Architecture Multi
Residential, Constructed

2018 – Banksia,
NewQuay

Good Design Awards
Winner, Architectural Design
Commercial & Residential

2018 – Banksia,
NewQuay

Melbourne Design Awards Gold
Winner, Architecture & Interior
Design, Residential

2017 – Promenade Aqai,
NewQuay

Melbourne Design Awards
Silver Winner Architecture
Residential, Constructed

2015 – Monument Park,
NewQuay

Melbourne Design Awards Gold
Winner for Urban Design

2014 – The Quays,
NewQuay

Melbourne Design Awards
Gold Winner Architecture
Residential, Constructed
Silver Winner Interior Design
Residential



Elm & Stone NewQuay, Designed by DKO, Developed by MAB



Escala NewQuay, Designed by Six Degrees, Developed by MAB, Artist Impression

Established in 1992, Six Degrees is one of Australia's leading architectural practices. The practice has developed a well-recognised expertise in residential architecture, undertaking projects across scales, from townhouse developments to 20 storey residential towers. Projects are characterised by attention to detail, robust natural materials, and the quality of the internal spaces.

Sustainability is a pillar of Six Degrees' work. A certified carbon neutral practice, Six Degrees has been an active leader in sustainability, understanding this as both a responsibility and a way of improving amenity and ongoing running costs for residents.

Putting people and the user experience at the centre of design strategies has been the foundation for the successful delivery of projects over the course of 30 years of practice. With a focus on the social and cultural needs of projects, this human centred approach is perfectly suited for the creation of master planned residential communities. Six Degrees' residential apartments encourage connections between people and offer easy access to light, ventilation and the natural environment.

Six Degrees' understanding of people, space and architecture enables the practice to develop strategies in architecture that allow community to thrive.



Hawke + King Apartments, West Melbourne



Towers Road Residence, Toorak

T.C.L

TCL is one of the world's most highly acclaimed landscape architecture and urban design firms. Over the past twenty-five years, TCL has delivered a wide range of projects across public and private settings, from urban waterfronts to desert walking trails. Working both nationally and internationally, TCL undertakes a detailed exploration of context, site and community, with a focus on the poetic expression of landscape and contemporary culture. Through a dynamic and collaborative dialogue with clients, communities, academics and colleagues, TCL has delivered a diverse body of work that speaks of quality, commitment, beauty and richness.



Two local Victorian artists have given their interpretation of the significance of Merri Creek and what it means to them.

John Graham

For this work "Merri Creek in Full Bloom" Graham has employed an expressionist style, using layers of oil paint, both as washes and thickly applied impasto, in addition, forms are reinforced graphically using thin lines in oil pastel.

"Merri Creek in Full Bloom" explores the vagaries of colour and form of late winter when flashes of yellow wattle glow along the winding watercourse.

Born in Perth, Western Australia, John Graham has been exhibiting his paintings since 1986. Graham is an expressionist painter and his subjects are the landscape, animals and the human figure, and has been a finalist in many Australian Art Prizes – most notably the Waterhouse Art Prize on several occasions.

Jerry Osadczuk

Jerry Osadczuk is influenced by both Japanese ink painting (Sumie) which he studied while living in Japan for nine years. That, along with indigenous art influences are both incorporated into this piece.

This particular piece uses acrylic, oil, ink and natural ochre powder to develop texture. This is then mixed and applied differently through a combination of brush, palette, and hand.

Jerry Osadczuk is an intuitive painter who works with a variety of mediums and styles. Having studied Sumi painting in Japan for several years and believes this has had a great influence on his work and has been a finalist in the Cliftons Art Prize twice.

merri